

**NOTES**

- This drawing has been prepared to cover matters which are the requirements of the Company listed below and do not constitute a full specification of the work.
- All dimensions, details, components, and assemblies are to be verified by the Contractor PRIOR to construction, manufacture or supply.
- Any conflicting information, errors or omissions shown or implied on this drawing shall be referred to the Contractor PRIOR to construction or ordering of materials.
- Do not scale this drawing.
- This drawing is the Copyright of Joinery Cad Solutions Ltd and may not be copied in part or whole without written permission.

**REVISIONS :**

- 24.10.2017 FIRST ISSUE FOR APPROVAL

**SPECIFICATIONS :**

**MATERIAL:**

- CAR CASE FROM OAK VENEERED 18mm MDF.
- 6mm MATCHING BACKS
- DRAWERS FROM OAK VENEERED 18mm MDF.
- SOLID OAK FRONTS WITH MOULDED HANDLE AS DETAILED OR SIMILAR
- PAINTED GOALPOST FRAME
- DOORS FROM 22mm PAINTED MDF
- 18mm MDF PAINTED PLINTH
- SOFTWOOD PLINTH FRAME

**GLASS:**

- 4mm SAFETY BACKED MIRROR WITH CHAMFERED EDGING, POLISHED ALL ROUND

**HARDWARE:**

- GRASS S/C CONCEALED HINGES, 5 No PER LEAF
- GRASS DYNAPRO S/C DRAWER RUNNERS
- HAFELE OVAL CHROME HANGING RAILS
- HANDLES FROM HAFELE REF: 193.18.403, FINISHED TO MATCH INTERNALS

**FINISH:**

- DOORS AND GOALPOST FRAME FULLY PAINT FINISHED REF: OO-E-55 20% SHEEN

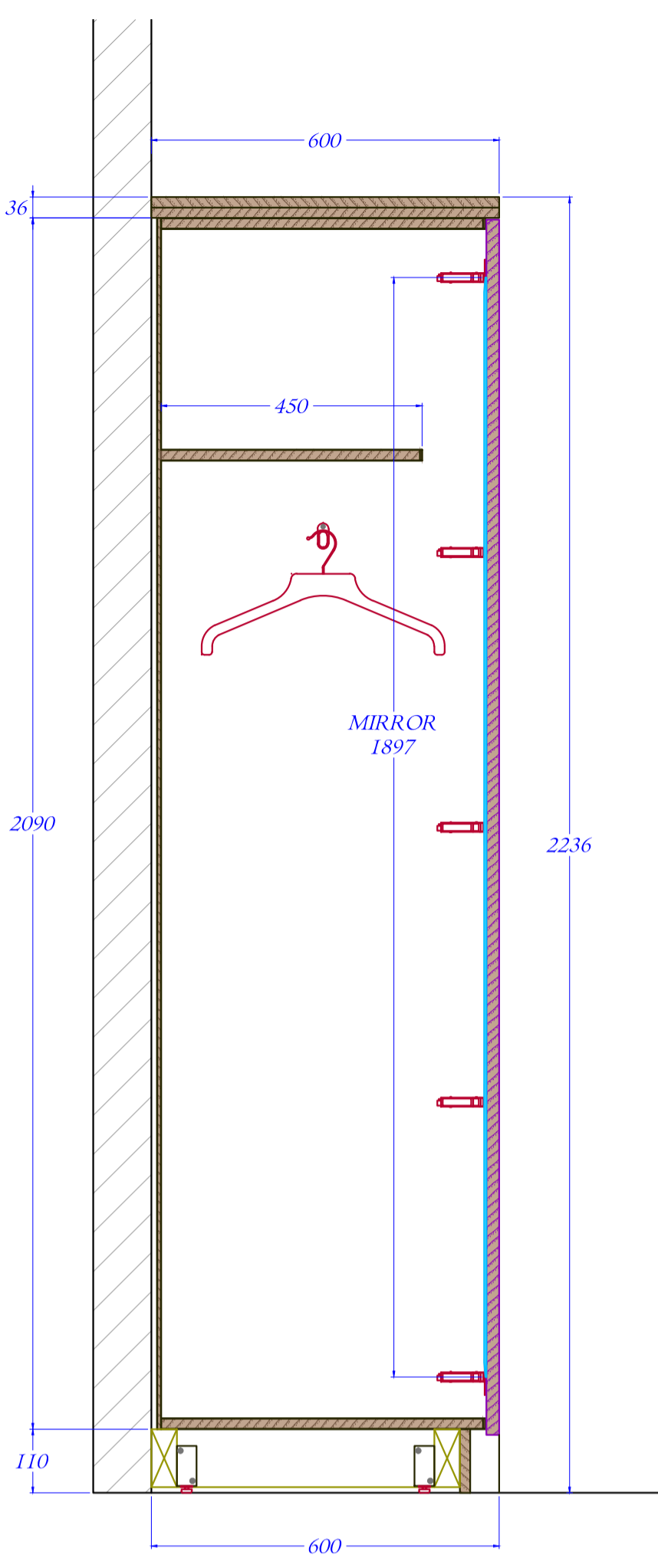
**NOTES:**

- CLIENT TO CONFIRM DESIGN PRIOR TO MANUFACTURE

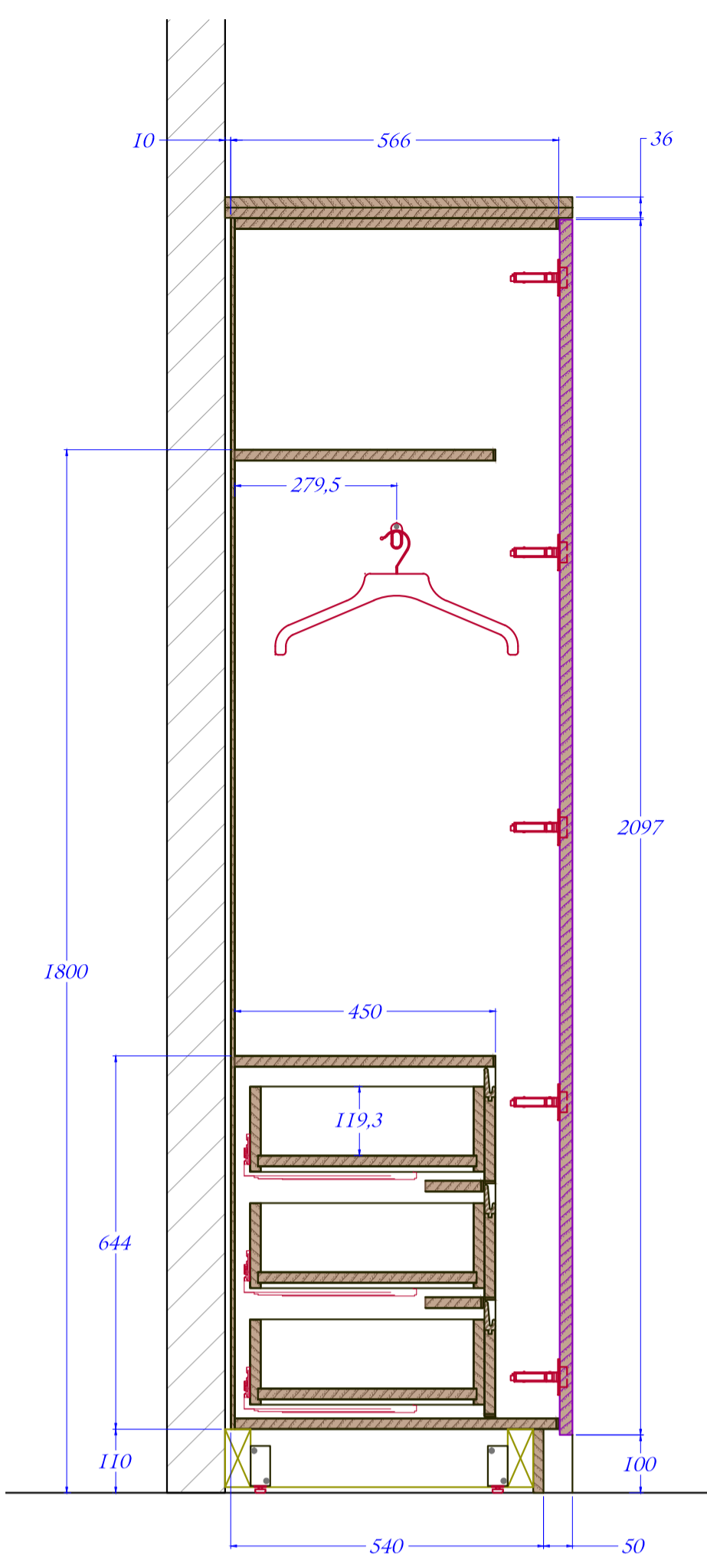
4.75 Hours To Complete

SAMPLE

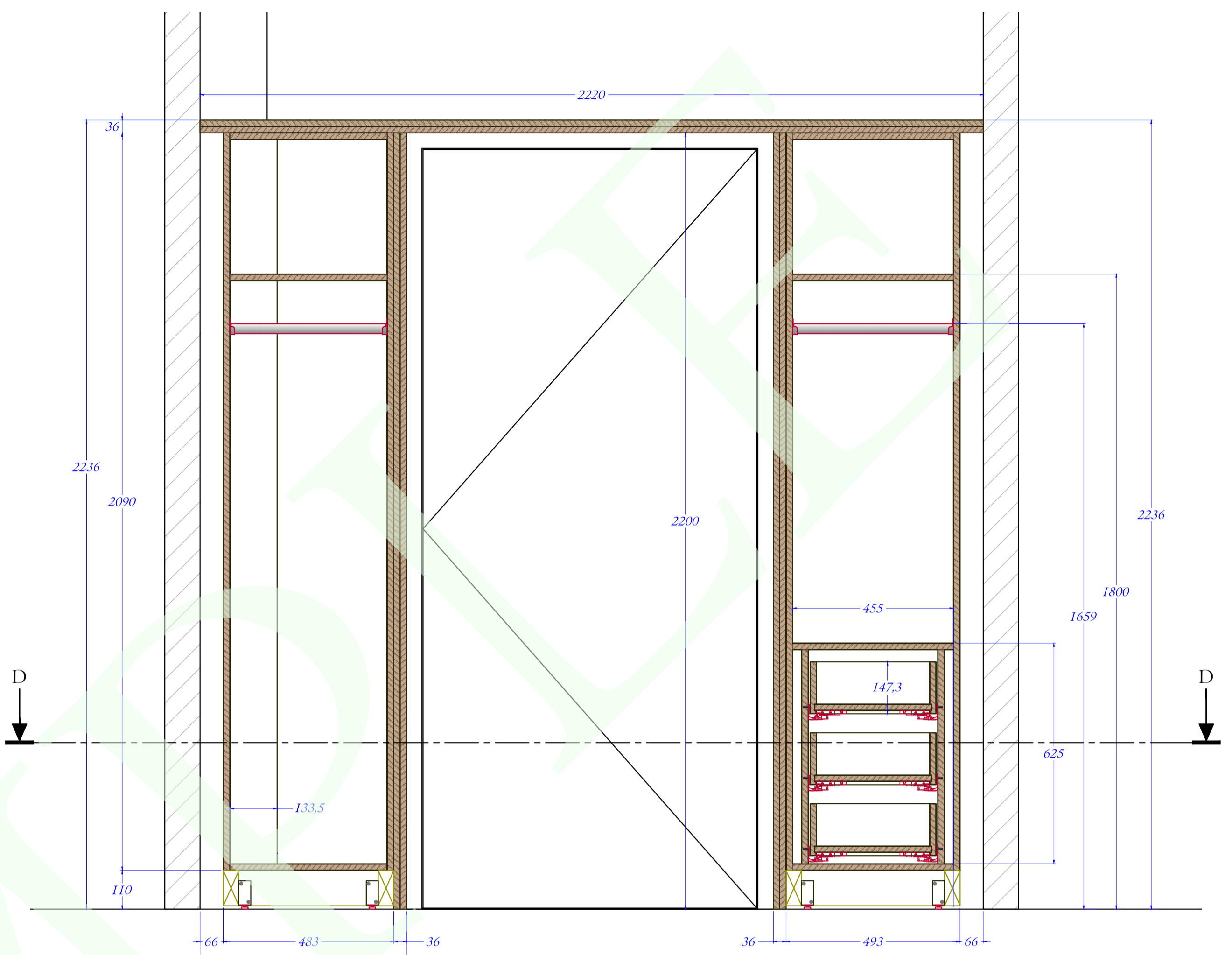
CLIENT	----
PROJECT	----
TITLE	BEDROOM 2, WARDROBE JU.02 CONSTRUCTION DETAILS
ISSUE	CLIENT APPROVAL
JOB No	----
DRAWING No	----/002
CUT LIST No	
SCALE	1:1, 1:10, 1:20 @ AI
DRAWN BY	JCS
CHECKED BY	REV ~



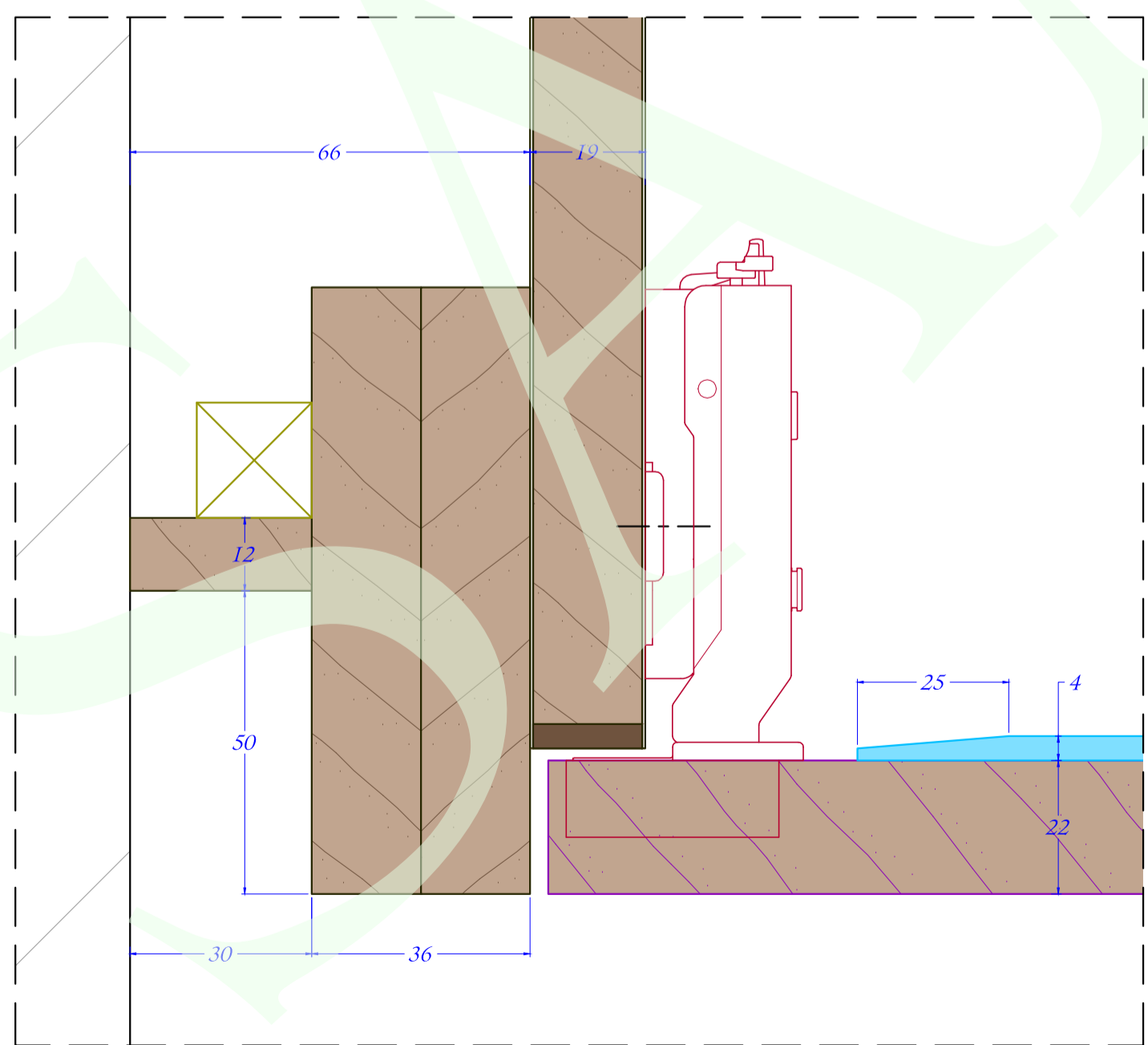
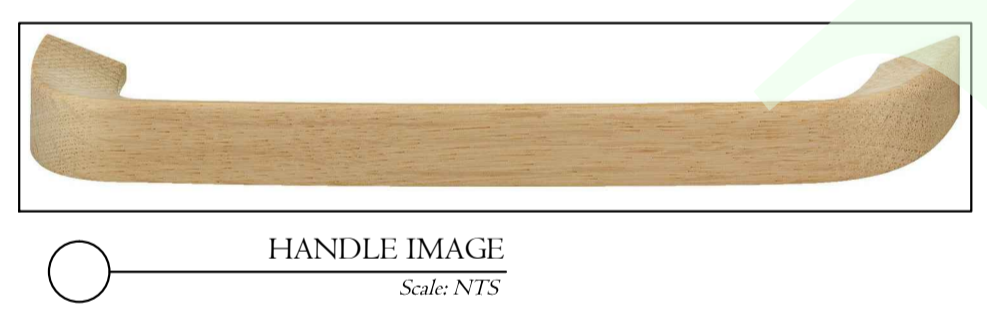
A - A



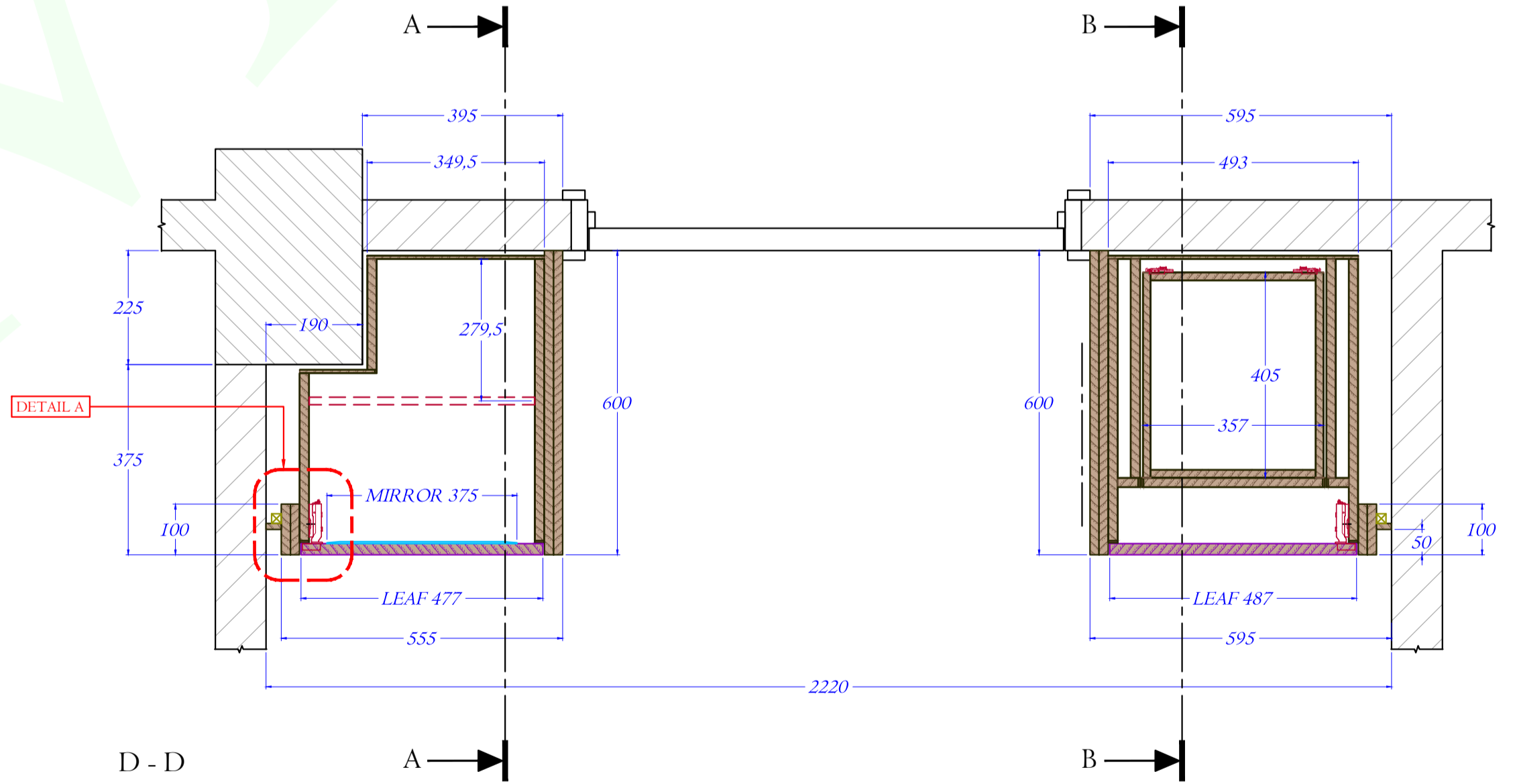
B - B



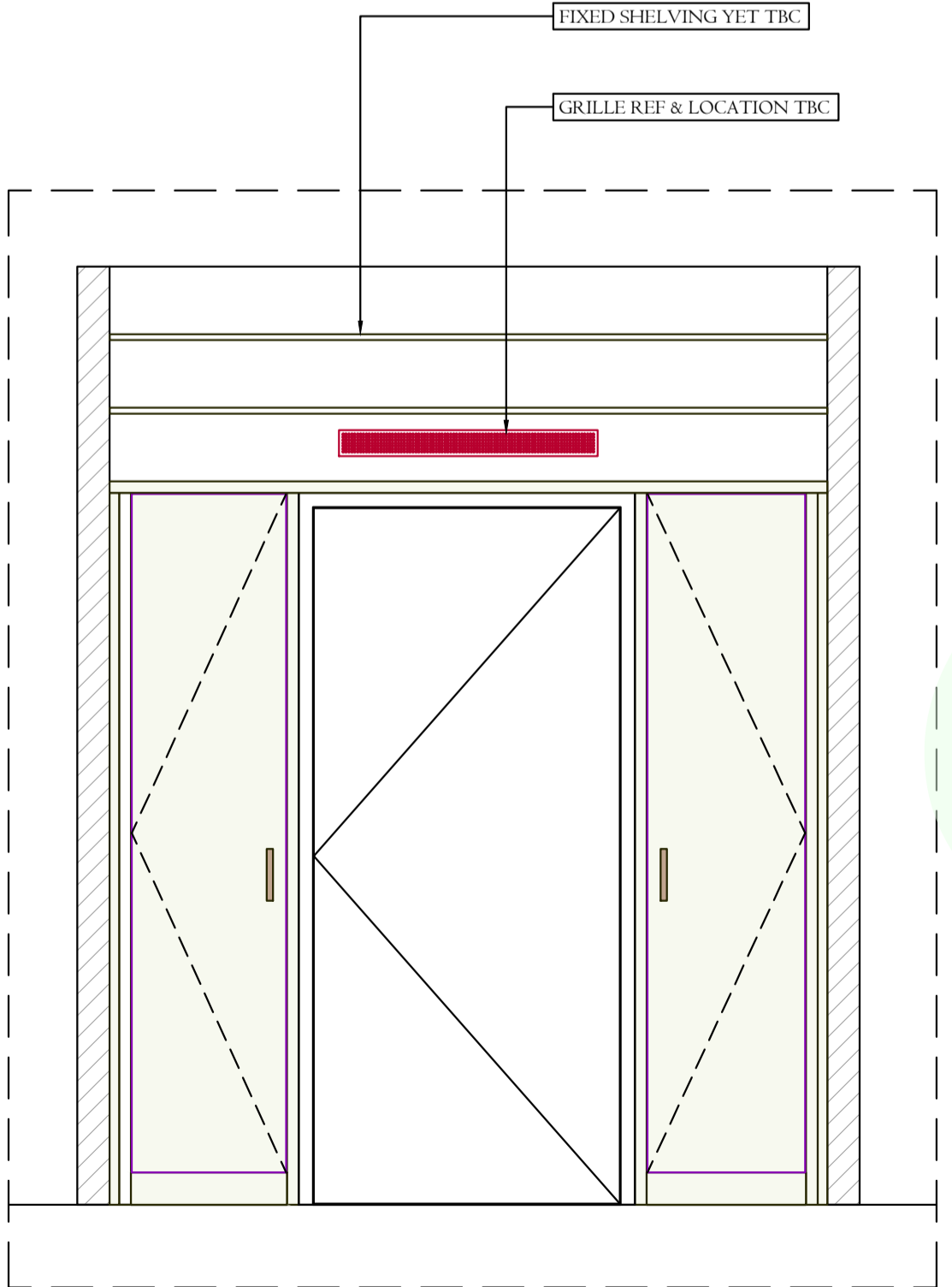
C - C



DETAIL A Scale: 1:1



D - D



ELEVATION Scale: 1:20

NOTE: ALL DIMENSIONS TO BE CHECKED AND AMENDED ON SITE