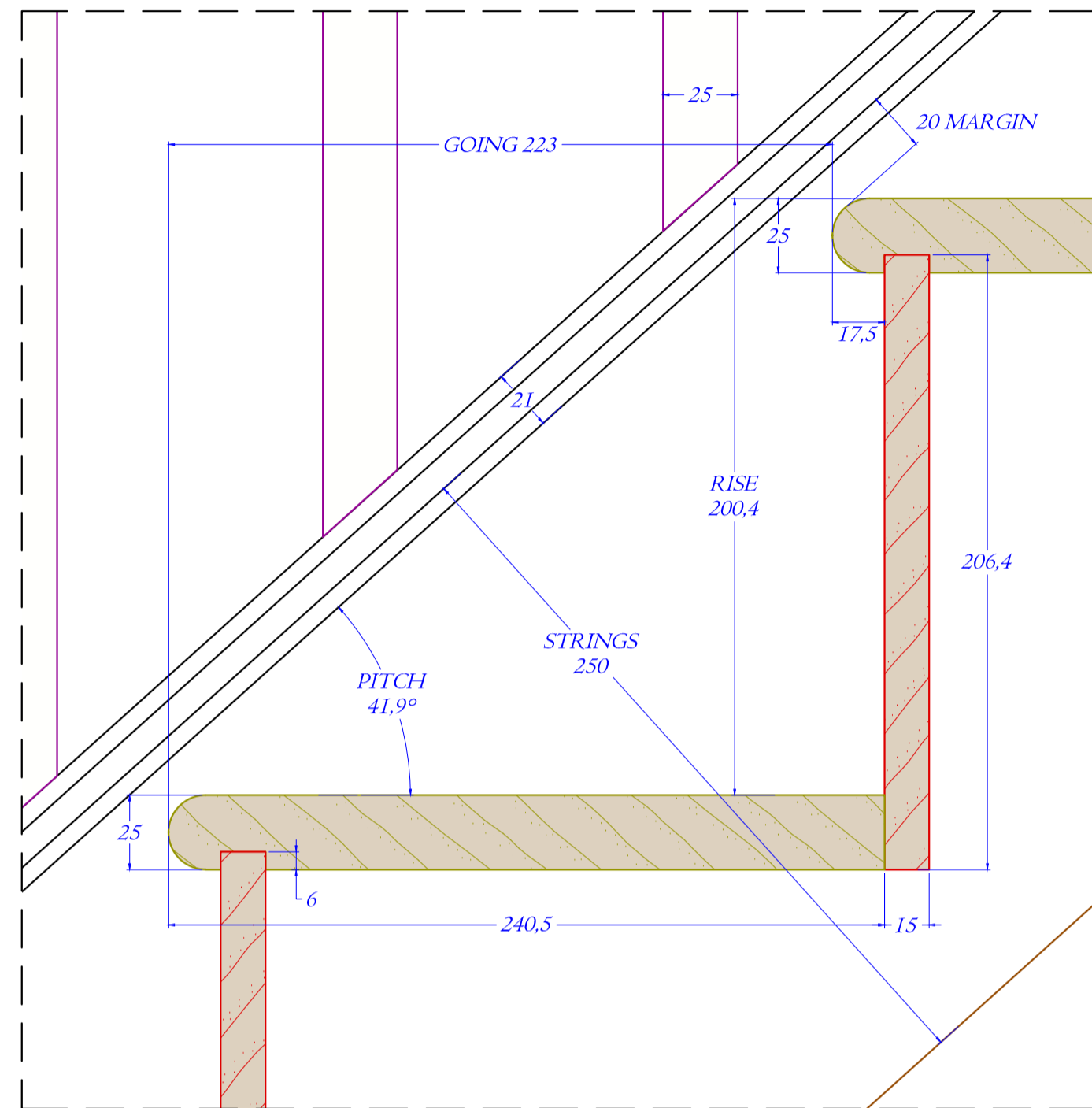
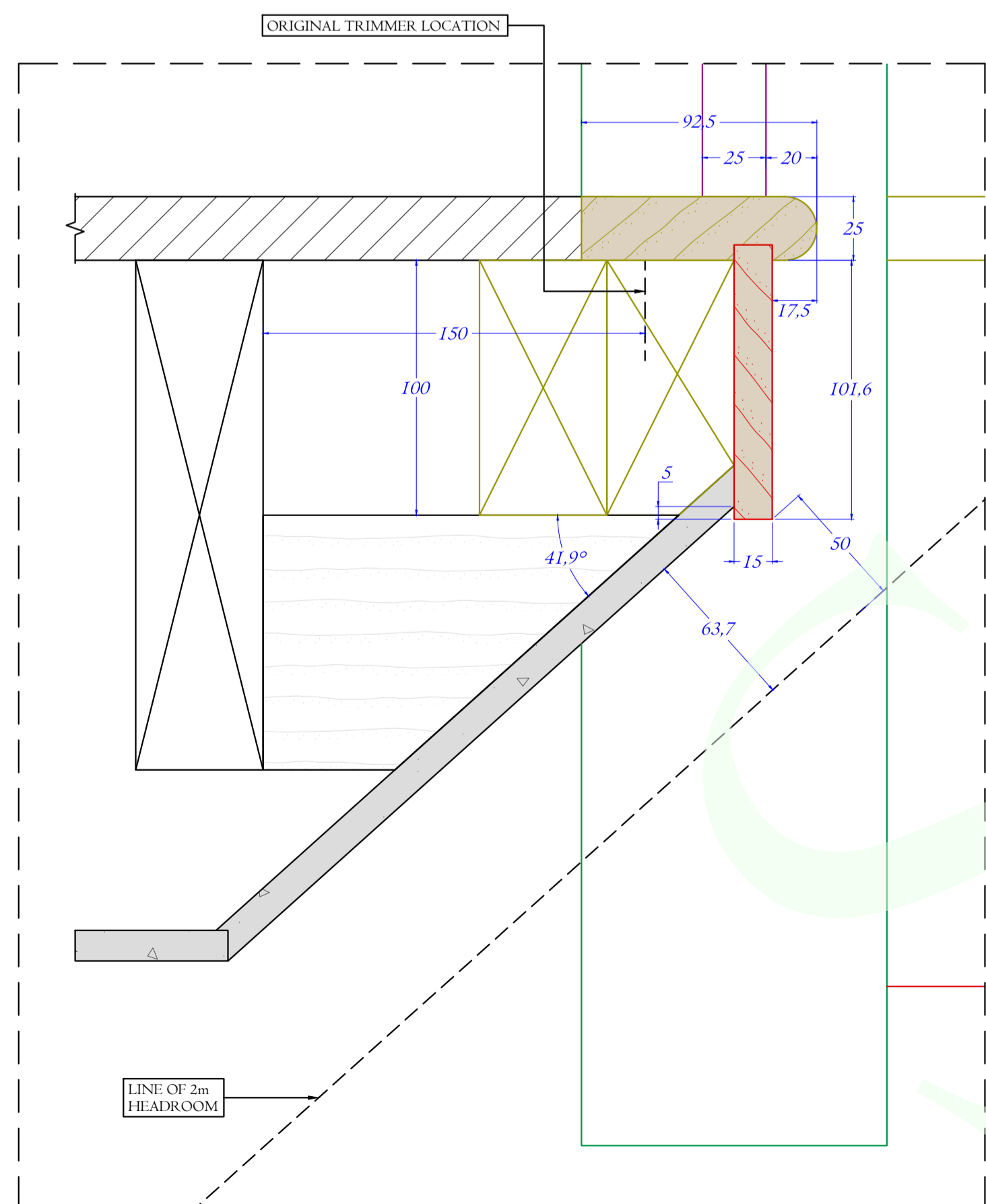


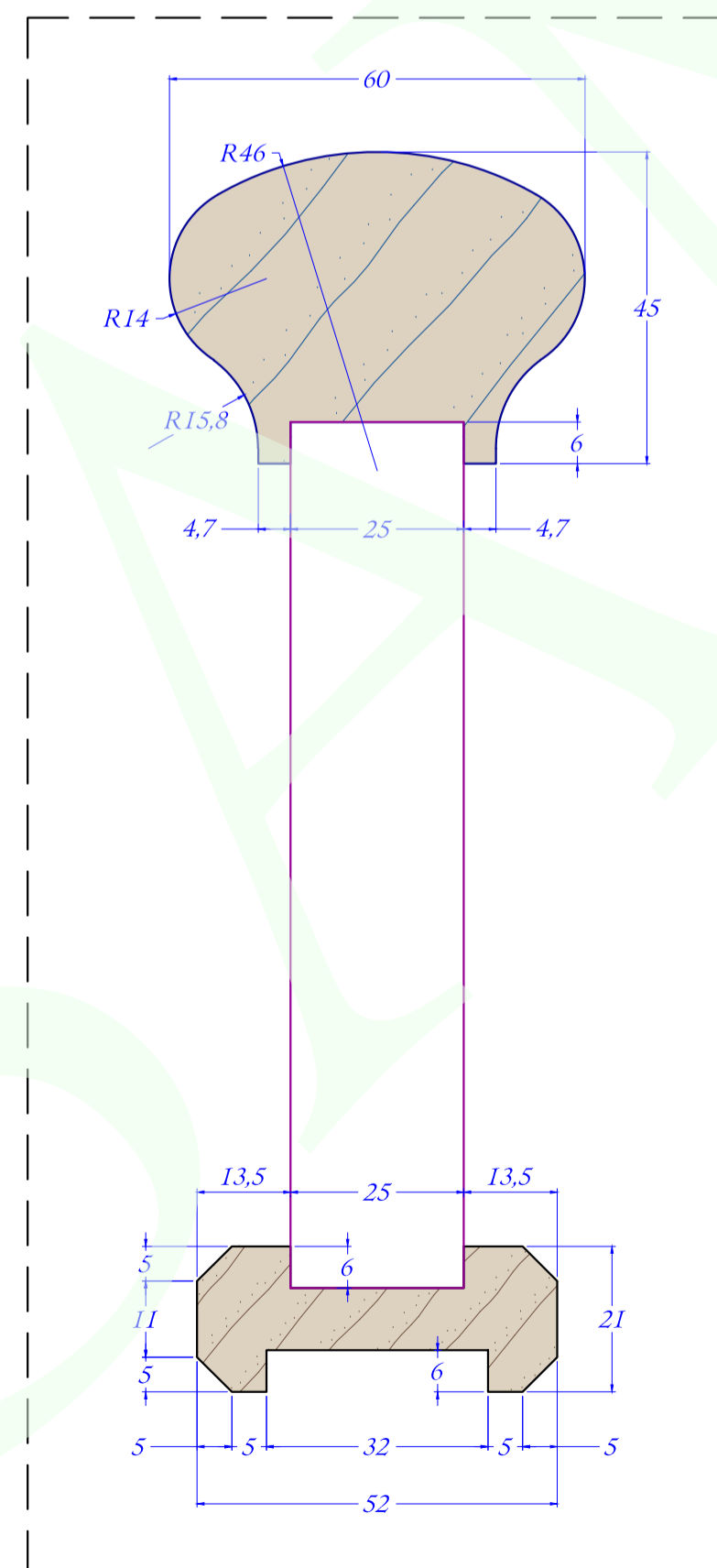
4 NEWEL CAP DETAIL
Scale: 1:1



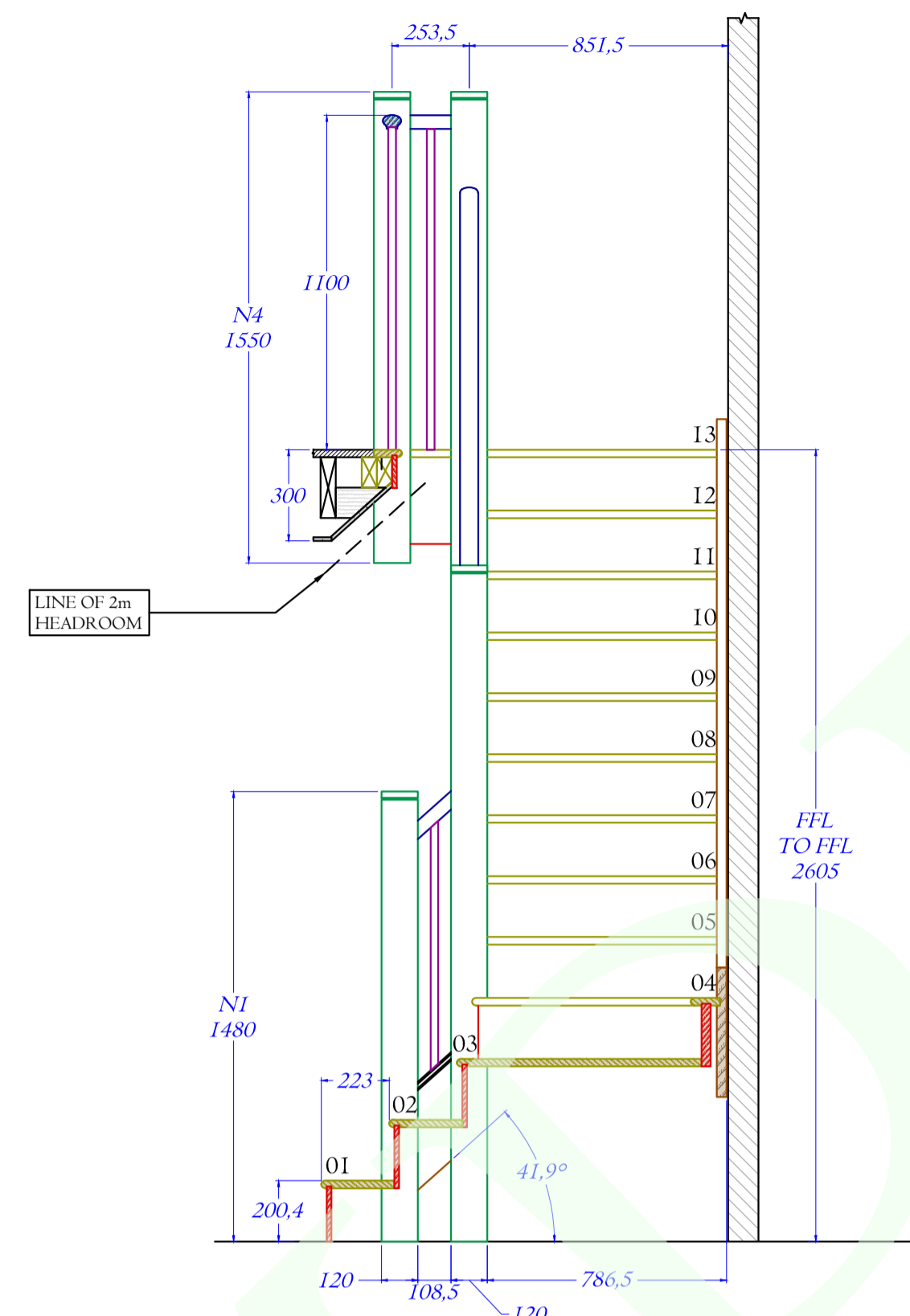
1 TREAD DETAIL
Scale: 1:2



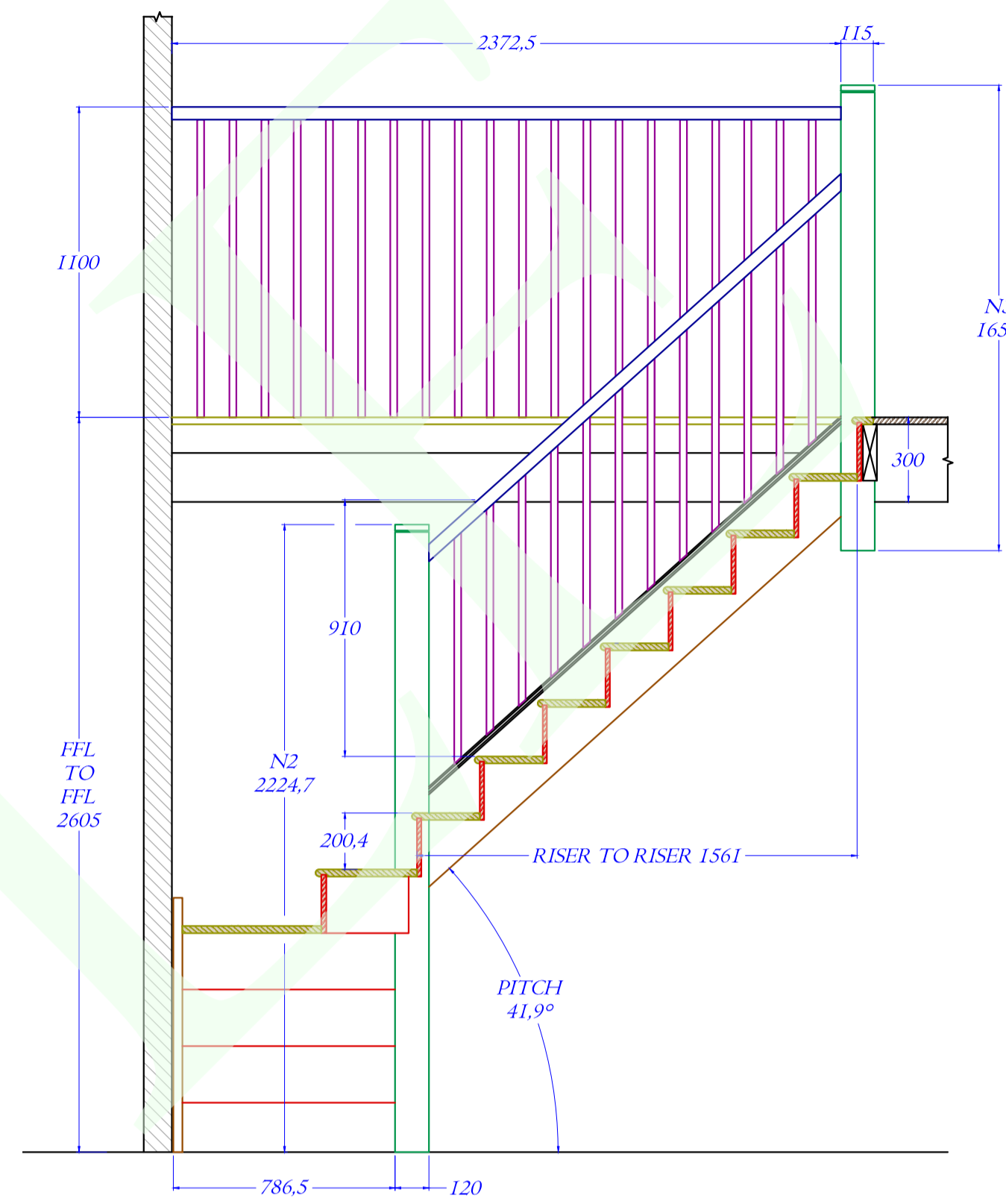
2 APRON DETAIL
Scale: 1:2



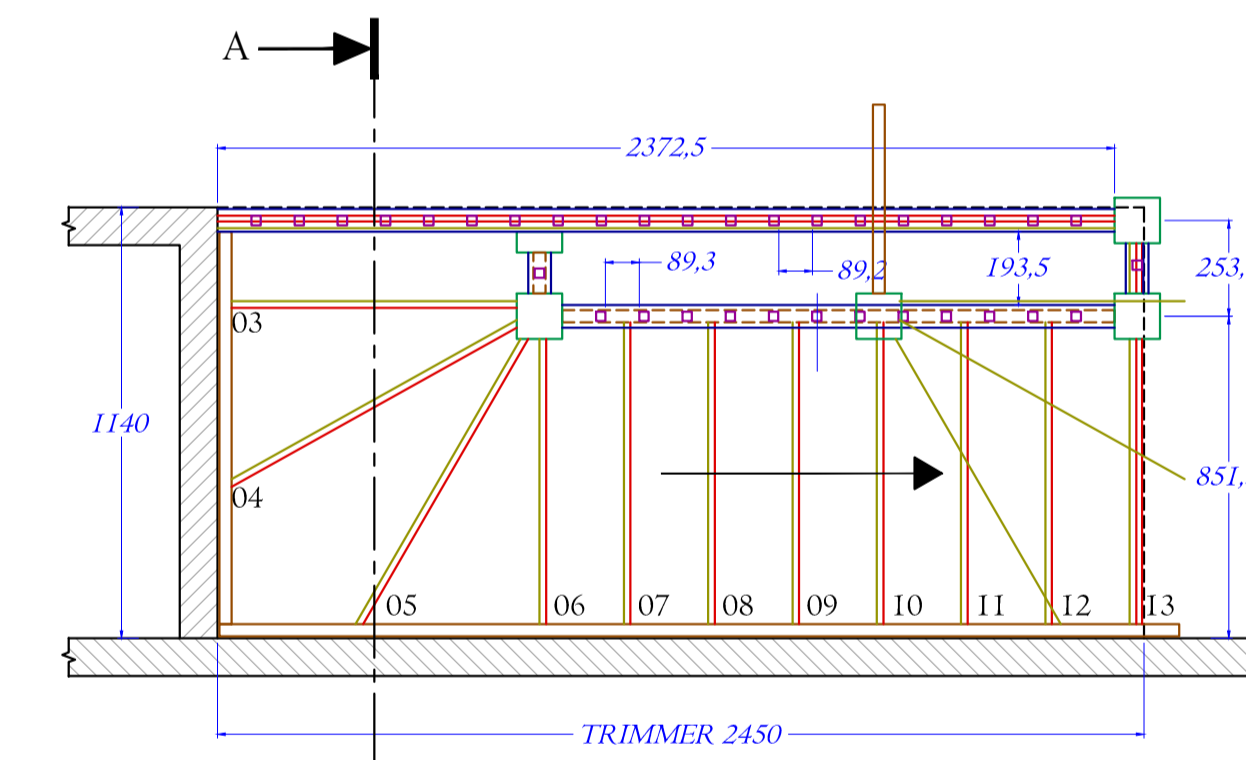
3 RAIL/BASERAIL DETAIL
Scale: 1:1



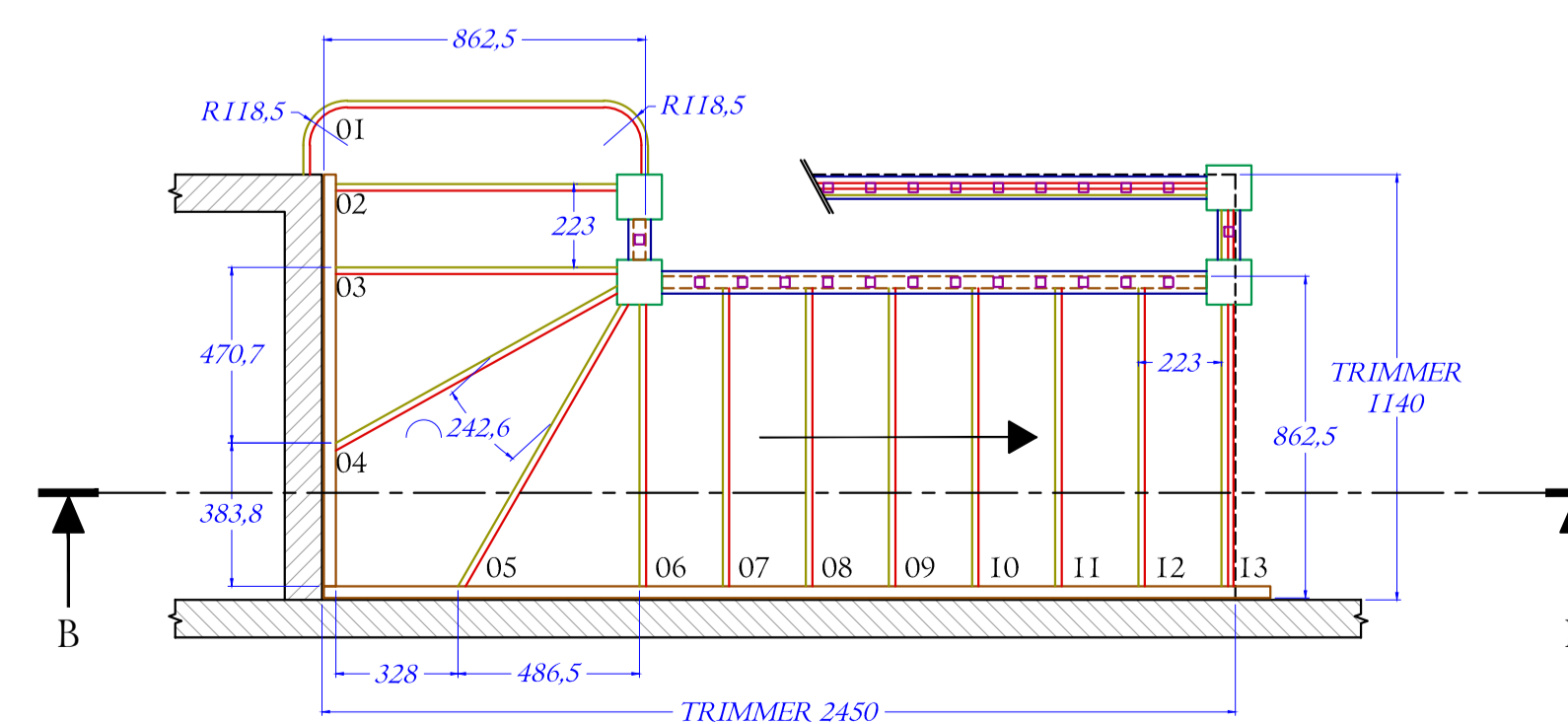
SECTION A-A
Scale: 1:20



SECTION B-B
Scale: 1:20



P01 UPPER PLAN DETAIL
Scale: 1:20



P02 LOWER PLAN DETAIL
Scale: 1:20

NOTES
 1. This drawing has been prepared to cover matters which are the requirements of the Company listed below and do not constitute a full specification of the work.
 2. All dimensions, details, components, and assemblies are to be verified by the Contractor PRIOR to construction, manufacture or supply.
 3. Any conflicting information, errors or omissions shown or implied on this drawing shall be referred to the Contractor PRIOR to construction or ordering of materials.
 4. Do not scale this drawing.
 5. This drawing is the Copyright of Joinery Cad Solutions Ltd and may not be copied in part or whole without written permission.

REVISIONS:
 ~ 17.08.2017
 • FIRST ISSUE FOR APPROVAL
 A. 22.08.2017
 • TRIMMER RELOCATED, APRON AMENDED

SPECIFICATIONS:
 DETAILS:
 • 13 NO RISERS 223mm
 • GOING 200.4mm
 • RISE 41.9°
 • PITCH 2605mm
 • FFL TO FFL 862.5mm
 • O/S STRINGS 32mm
 MATERIAL:
 • STRINGS - 32mm SOFTWOOD
 • NEWELS - 90mm² SOFTWOOD
 • HANDRAIL - SOFTWOOD
 • BASERAIL - SOFTWOOD
 • SPINDLES - 25mm² SOFTWOOD
 • TREADS - 25mm MDF
 • RISERS - 18mm MDF

FINISH:
 • SUPPLIED ONE COAT PRIMER DOR SITE
 FINISHING BY OTHERS
 NOTES:
 • ALL DIMENSIONS TO BE CHECKED ON SITE
 PRIOR TO MANUFACTURE

8 Hours
To Complete

SAMPLE

CLIENT	----
PROJECT	----
TITLE	PLOT 1 STAIRCASE CONSTRUCTION
ISSUE	CLIENT APPROVAL
JOB No	----
DRAWING No	----/001
CUT LIST No	
SCALE	1:1, 1:2, 1:20 @ AI
DRAWN BY	JCS REV ----
CHECKED BY	